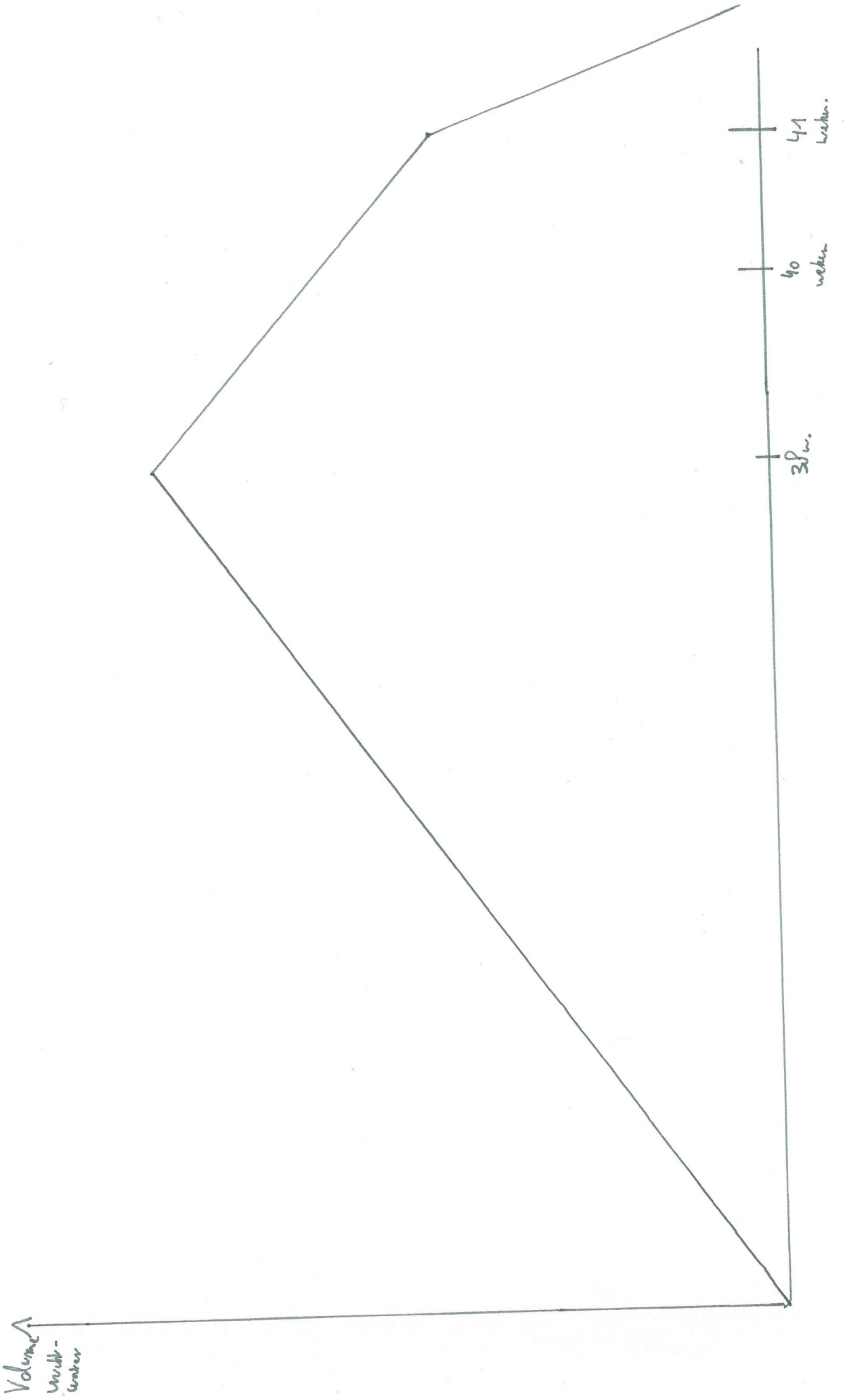
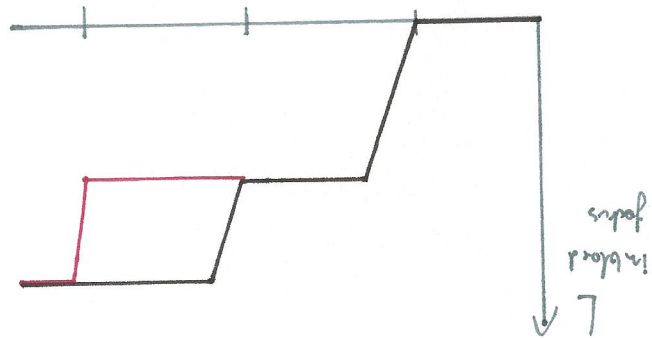
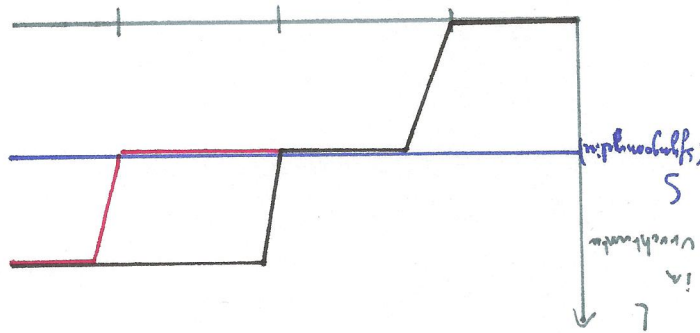
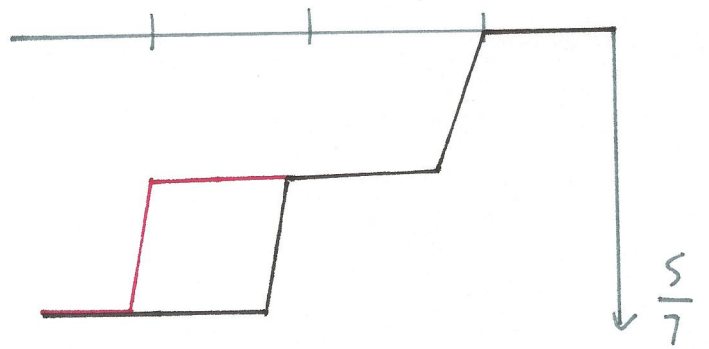
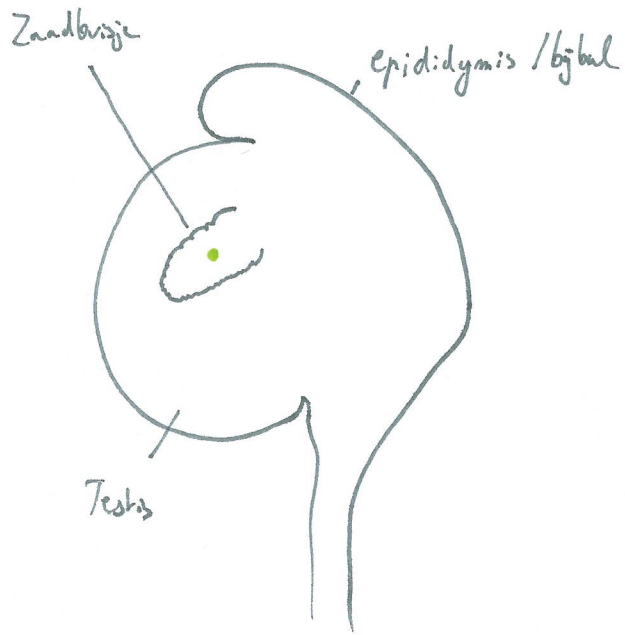


Tekening 75



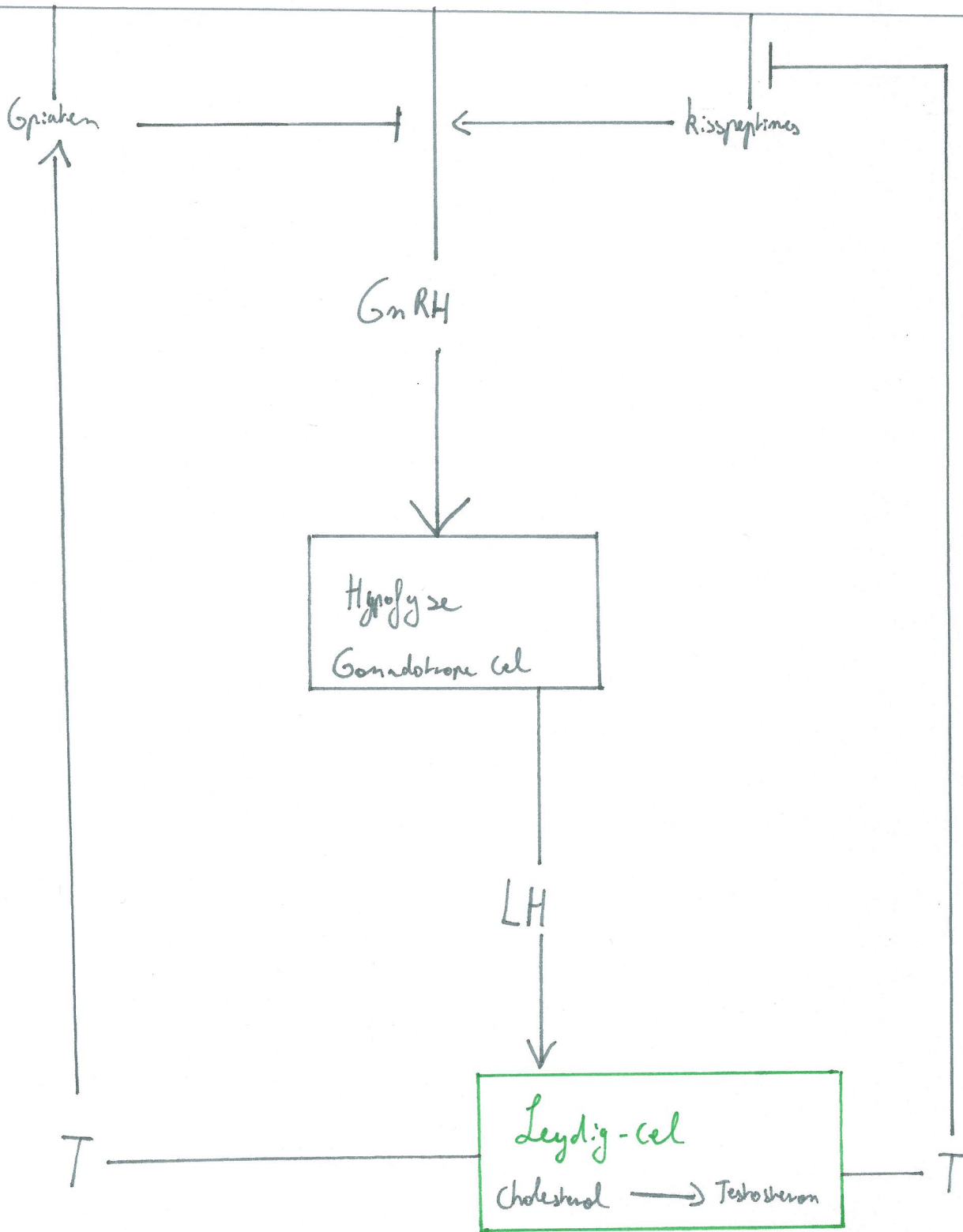


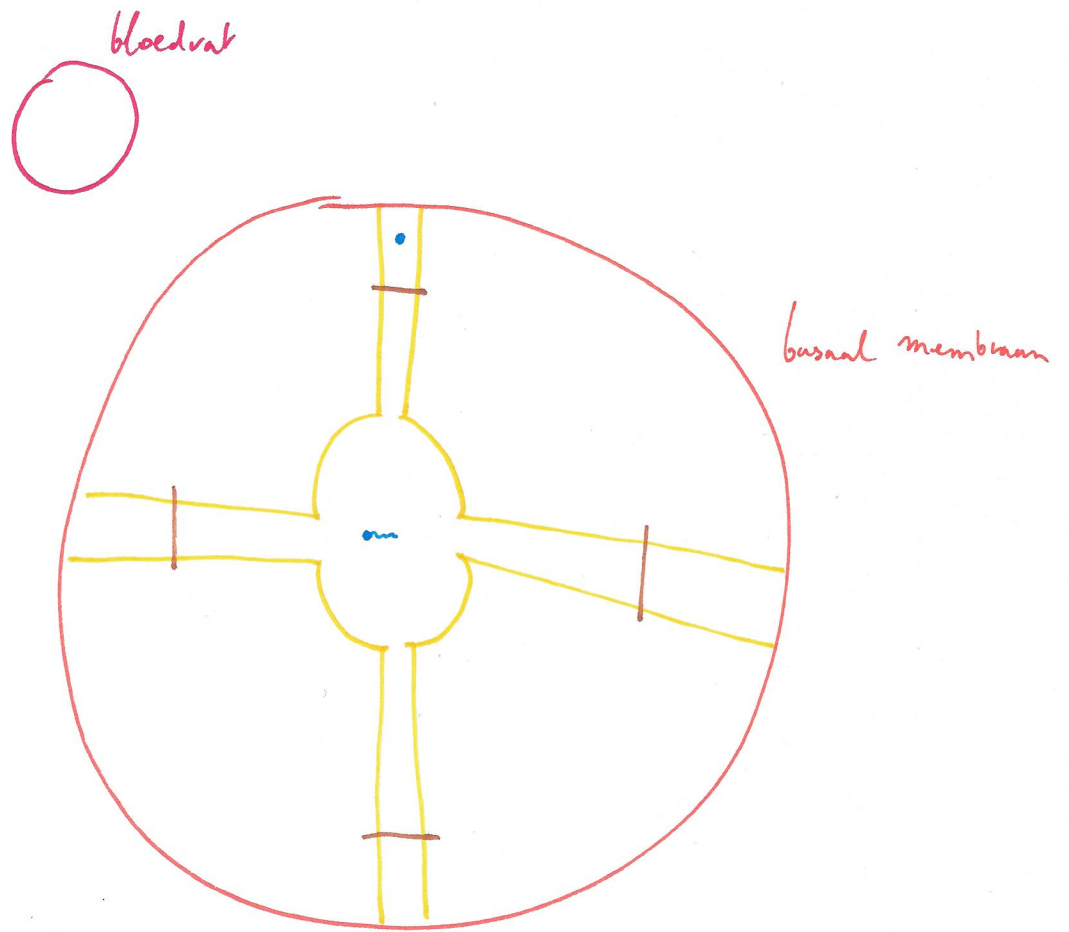
# Tekening 77



• Leydigcellen

Hypothalamus





Sertoli: kellen ~ gonadosmeellen

— = tight junctions  
↳ barrière tussen bloed & testis

• = primitieve zaadcel / stamcel

— = rijpe zaadcel

Tekening 30

Hypothalamus

GnRH

Hypofyse

Inhibine

FSH

LH

Leydig cellen

C → T

E<sub>2</sub>

ER

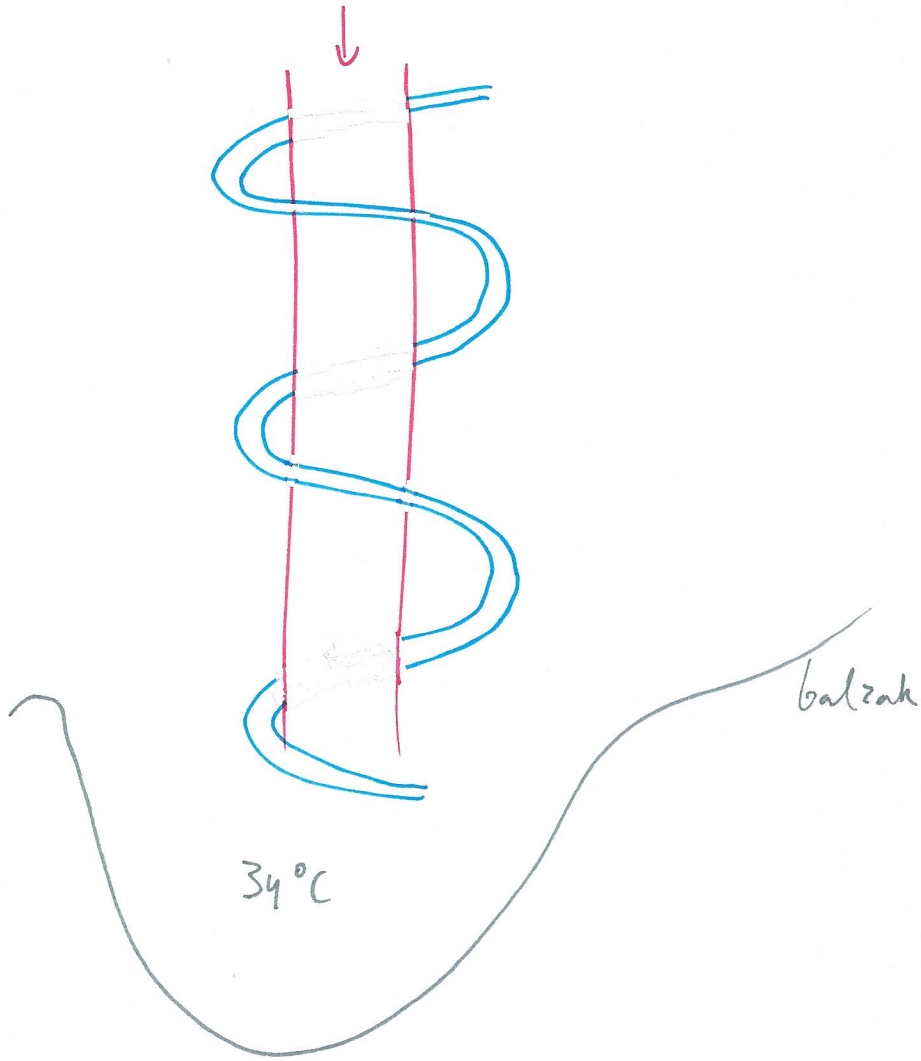
GF

AR

ABP

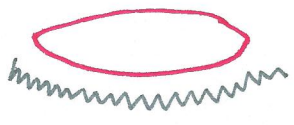
Tekening 81

37°C : slagader van buik naar seboven.

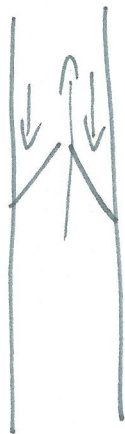




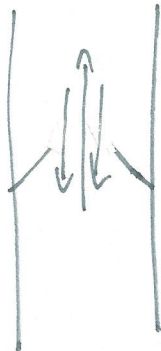
Tekening 82



Tekening 83



Goed



Slecht  
weke  
ademkleppen.