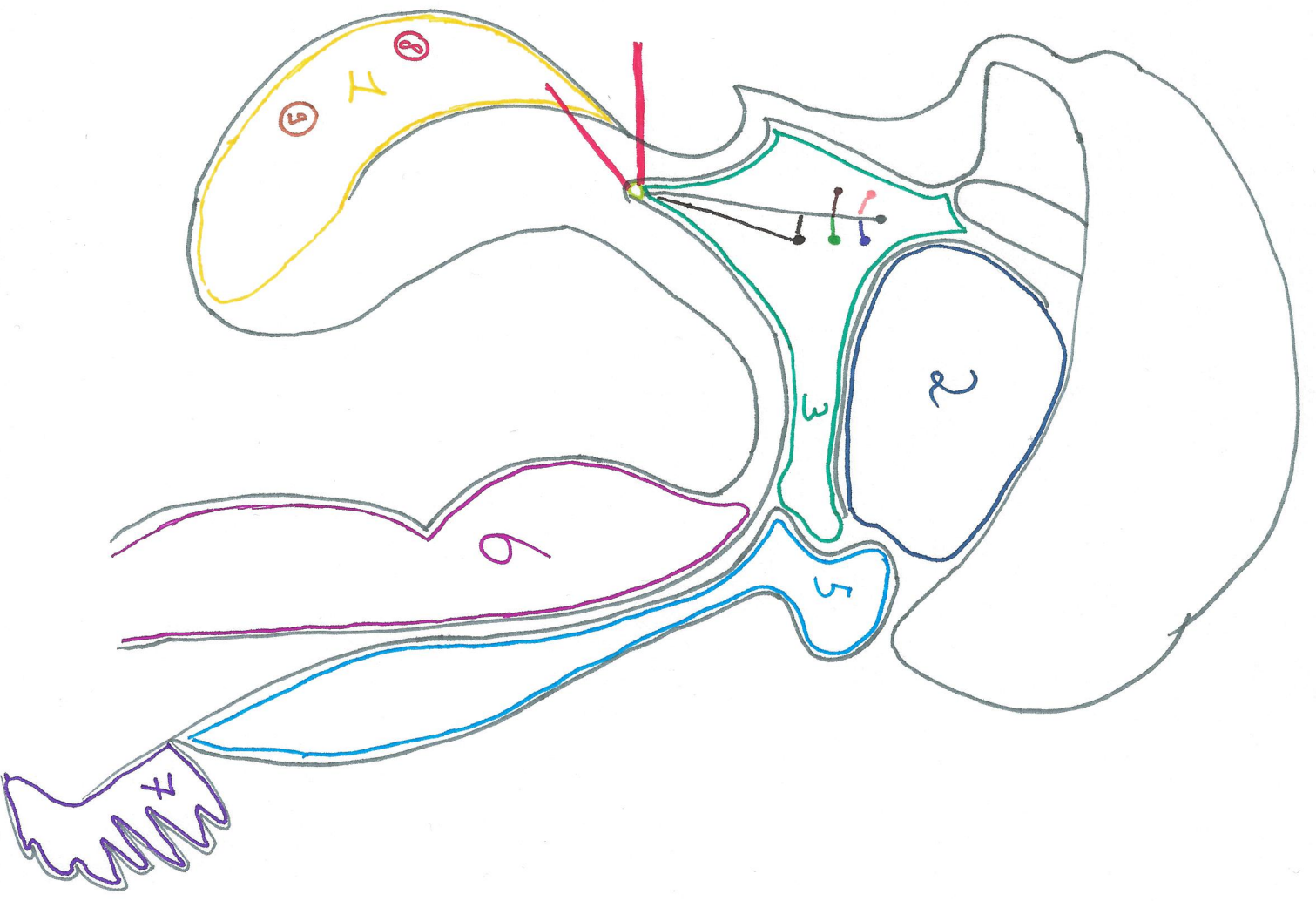


Tekening 1:
Hypothalamus - hypofyse as



- 1. Adeno-hypofyse (voorherses hypofyse) |
- 2. Thalamus |
- 3. Hypothalamus |
- 4. Eminencia mediana |
- 5. Epifyse |
- 6. Hersenstam |
- 7. Cerebellum (kleine hersenen) |
- 8. Gonadotrope cel ○
- 9. Lactotrope cel ○
- 10. Bloedvaten |
- 11. Samenwaaier |
- 12. Neuropeptide Y •
- 13. Gvataren •
- 14. Kisspeptines •
- 15. Dopamine •